

# SECTION 4.8\_KSEV

## EMERGENCY RELIEF VALVE PRESSURE VACUUM RELIEF

### INTRODUCTION

**The model KSEV** is designed to provide emergency pressure vacuum relief for storage tanks when exposed to over pressures and over vacuum that are not handled by standard tank vents. These vents provide the capacity to meet API standard 2000 for emergency venting due to fire exposure when properly sized. These covers also provide quick easy access for tank inspection and maintenance.

### Setting Pressure

KSEV Permanent Setting	Min. + 50/ - 25 mmW.C ~ Max. + 700/ - 700 mmW.C
------------------------	---

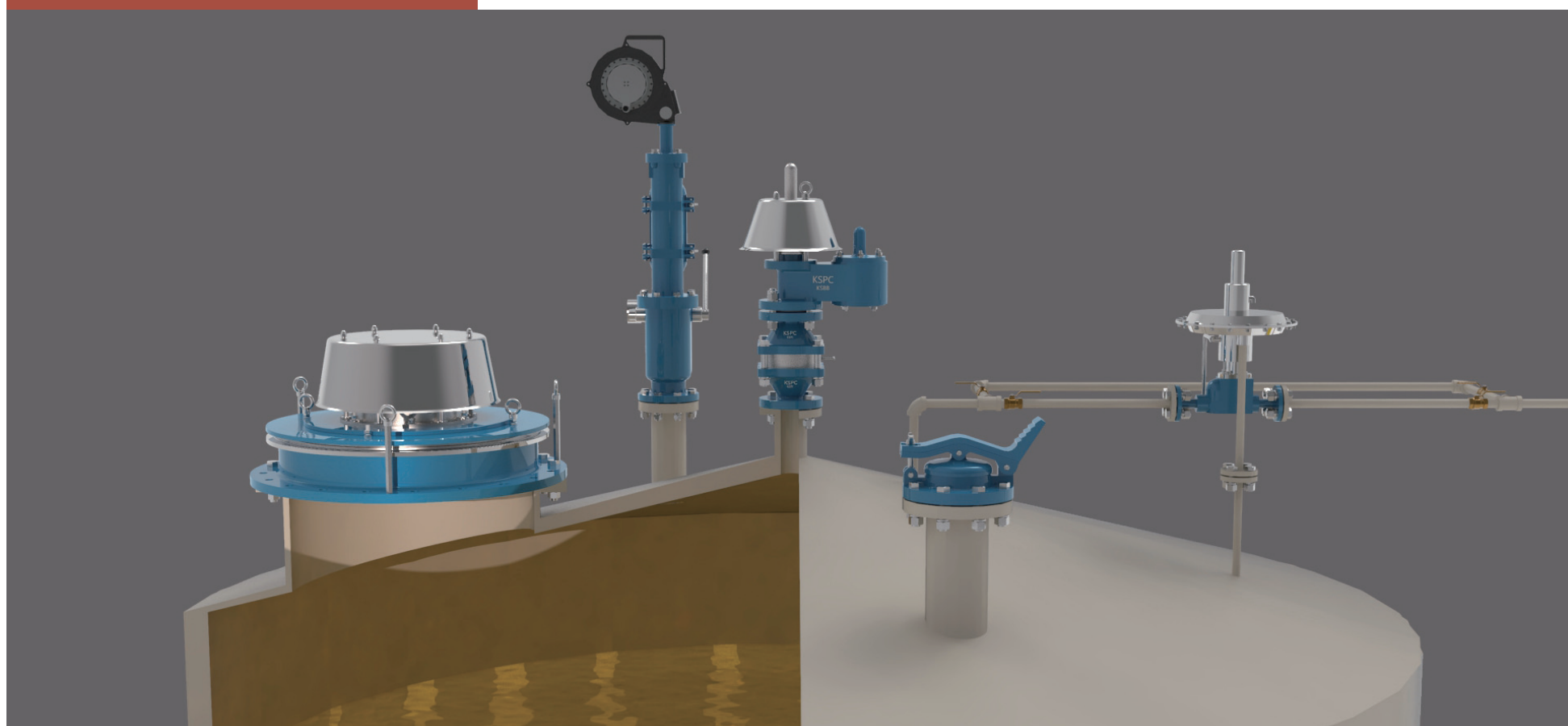
**Body Materials** Aluminium, Carbon Steel, SS304 and SS316 with various trims  
(Different materials available on request)

**Sizes range** DN 400, 450, 500 and DN 750 with ASME 150Lb or API 650 flanges  
(Different connections available on request)

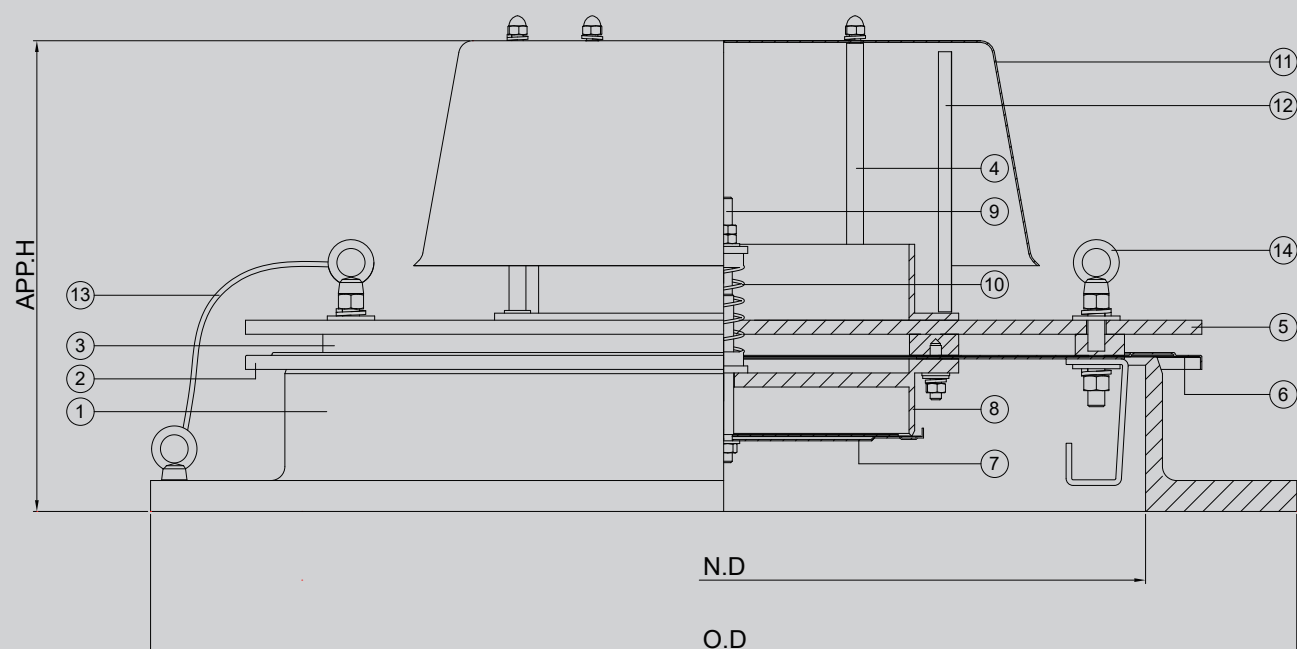
**Rules & Certifications** API 2000 & KFI

**Optimum / optional Design & Arrangements** Stem Jacket type, Steam Tracing type, Proximity type, Teflon Coating/Lining type

### APPLICATION



## OUTLINE DRAWING



## DIMENSION TABLE

SIZE		16"	18"	20"	24"
N.D		400	450	500	600
O.D	API 650	-	-	650/660	750/762
	ASME 150#	595	635	700	815
Approx. H	MIN.	320	320	320	320
	MAX.	380	380	380	380

**NOTE** CERTIFIED DIMENSIONS AVAILABLE UPON REQUEST (STD : API650).

## COMPONENT MATERIAL

ITEM NO	COMPONENT	BODY	ALUMINIUM	CARBON STEEL	SS304	SS316
		TRIM	SS304	SS304	SS304	SS316L
1	BODY		B26-319.F	A216-WCB	A351-CF8	A351-CF8M
2	PRESSURE DISC & PLATE		SS304	SS304	SS304	SS316L
3	BASE RING		CARBON STEEL	CARBON STEEL	SS304	SS316/SS316L
4	GUIDE		SS304	SS304	SS304	SS316L
5	LOADING WEIGHT		CARBON STEEL	CARBON STEEL	C.S or SS304	C.S or SS304
6	DIAPHRAGM		TEFLON			
7	VACUUM DISC		SS304	SS304	SS304	SS316L
8	VACUUM SEAT		SS304	SS304	SS304	SS316/SS316L
9	VACUUM SPRING STEM		SS304	SS304	SS304	SS316
10	VACUUM SPRING		SS304	SS304	SS304	SS316
11	WEATHER HOOD		SS304	SS304	SS304	SS316L
12	BIRD SCREEN		SS304	SS304	SS304	SS316
13	EARTH WIRE		SS304			
14	LIFTING EYE NUT		SS304			